



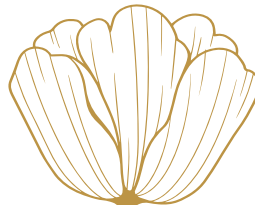
BRERAP00573-4/1278/R-/039/2020



Elite Residency

2 & 3 BHK
LUXURY APARTMENTS

Luxurious
LIFESTYLE REDEFINED



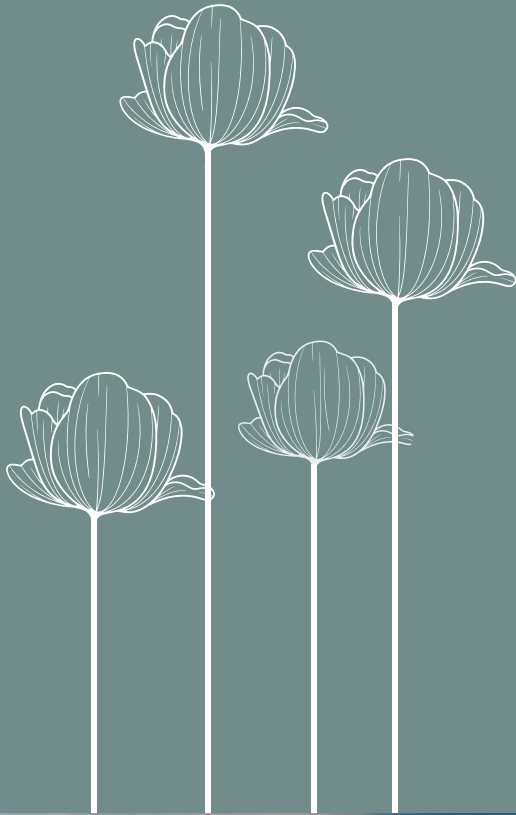
ABOUT BHAWANI INFRACON



The Patna based Bhawani Infracon Pvt. Ltd., founded by Mr. Raman Singh, has been building a legacy of integrity Et reliability since 2010. It is Bihar's most renowned and fastest growing Real- Estate Company. Within a span of 10 years, the company has embarked on its remarkable journey with a clear mission and vision

that comprises of many successful projects in Bihar. The Bhawani Infracon Pvt. Ltd. with its sharp foresight, adopted innovative technology and latest developments in construction science much ahead of time has helped in timely execution and delivering quality products to our clients. The company has carved a dedicated niche for itself in the real estate industry for its premium, affordable housing, fabulous internal Et external amenities and timely possession. The efficient team of the Company which comprises of the Management, Architects and

Engineers have embraced "customer satisfaction" in their every endeavour to fulfil the needs of its clients. The Company has brought smiles to thousands of happy families across all corners of Patna and will continue to construct the dreams of many with its massive design. Over the years, Bhawani Infracon Pvt. Ltd. has grown from strength to strength and has successfully completed many projects like Vasundhara Enclave, Shri Ram Enclave in Bihar while more upcoming projects are either under construction or ready for handover like Elite Residency, Bhawani Heights and Medica Tower. Bhawani Infracon Pvt. Ltd. now brings to you a glorious opportunity to lead a dream lifestyle at "Elite Residency". A lifestyle backed by the highest standards of construction, design ethics, product quality, luxuries, amenities and facilities.



AMENITIES



Three layered security – at the entrance gate and at the building reception area. Also, equipped with night vision cctv cameras.



Swimming pool



Exclusive reception area at the ground floor.



Community Hall



Terrace garden



Landscaped lawn for parties at the terrace level



Airport



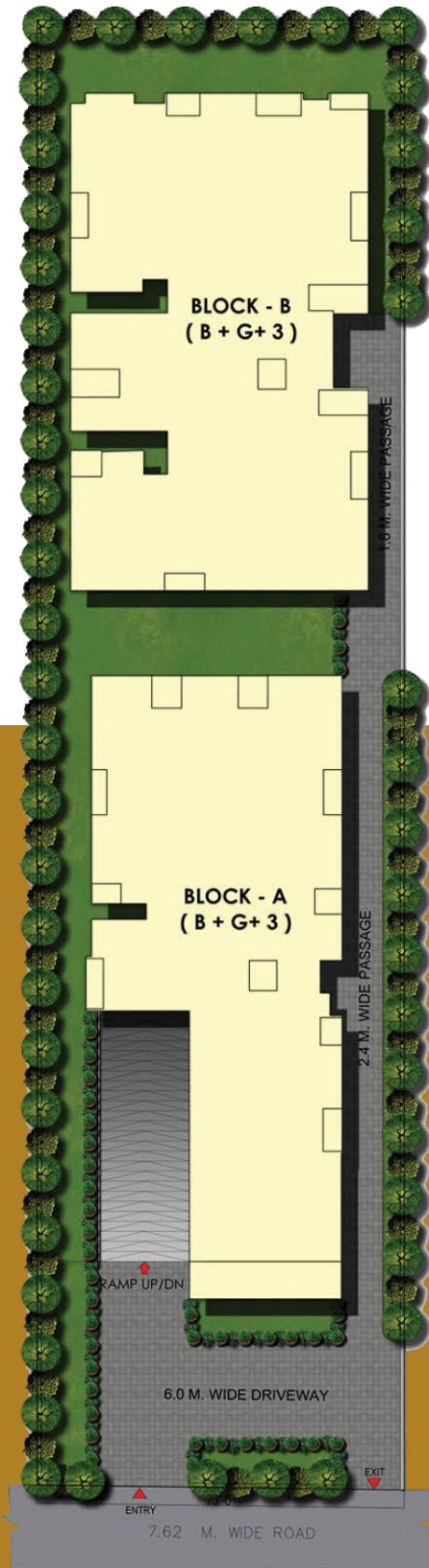
Passport Office



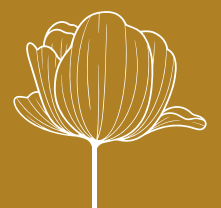
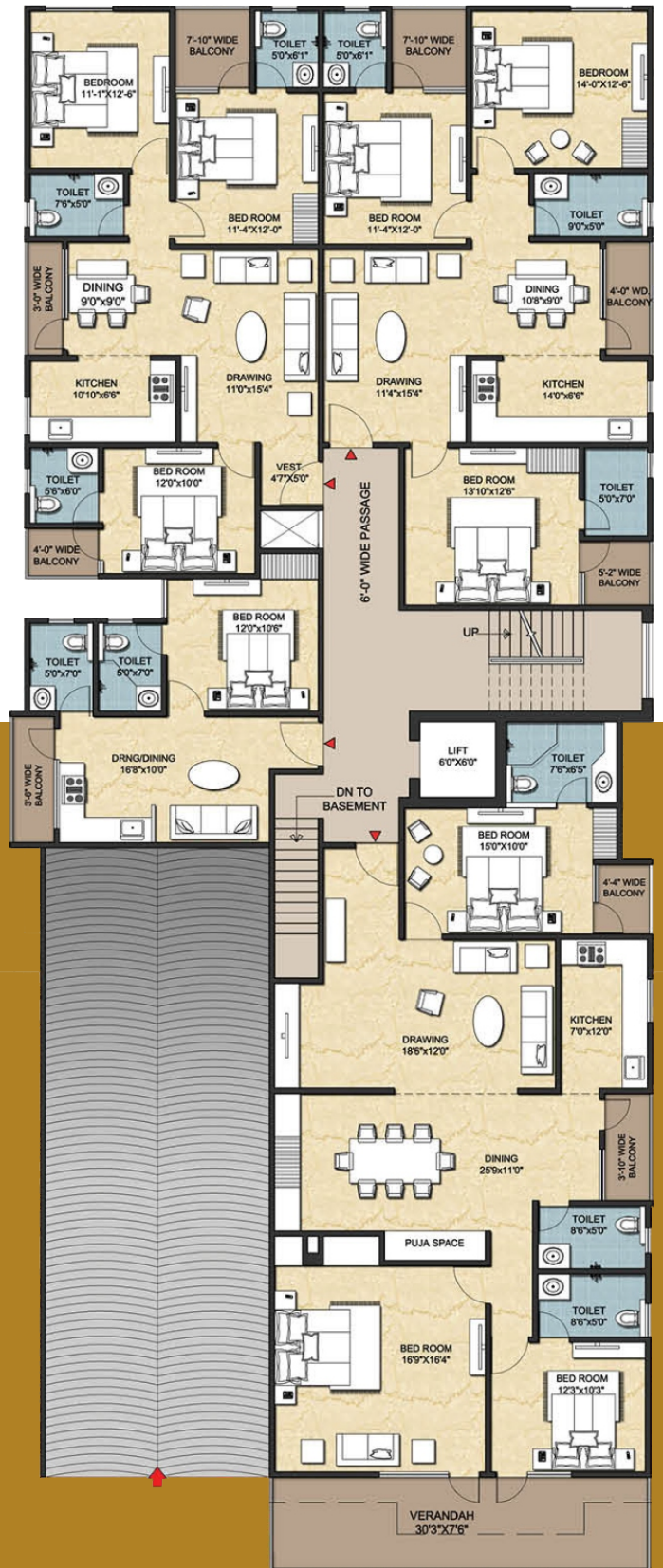
Patna Junction



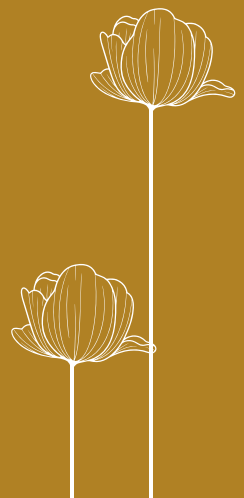
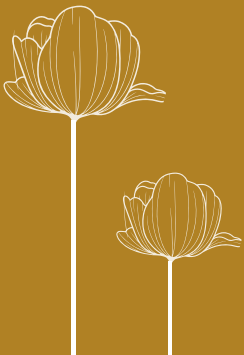
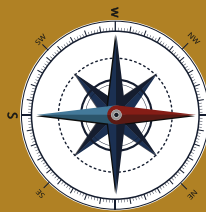
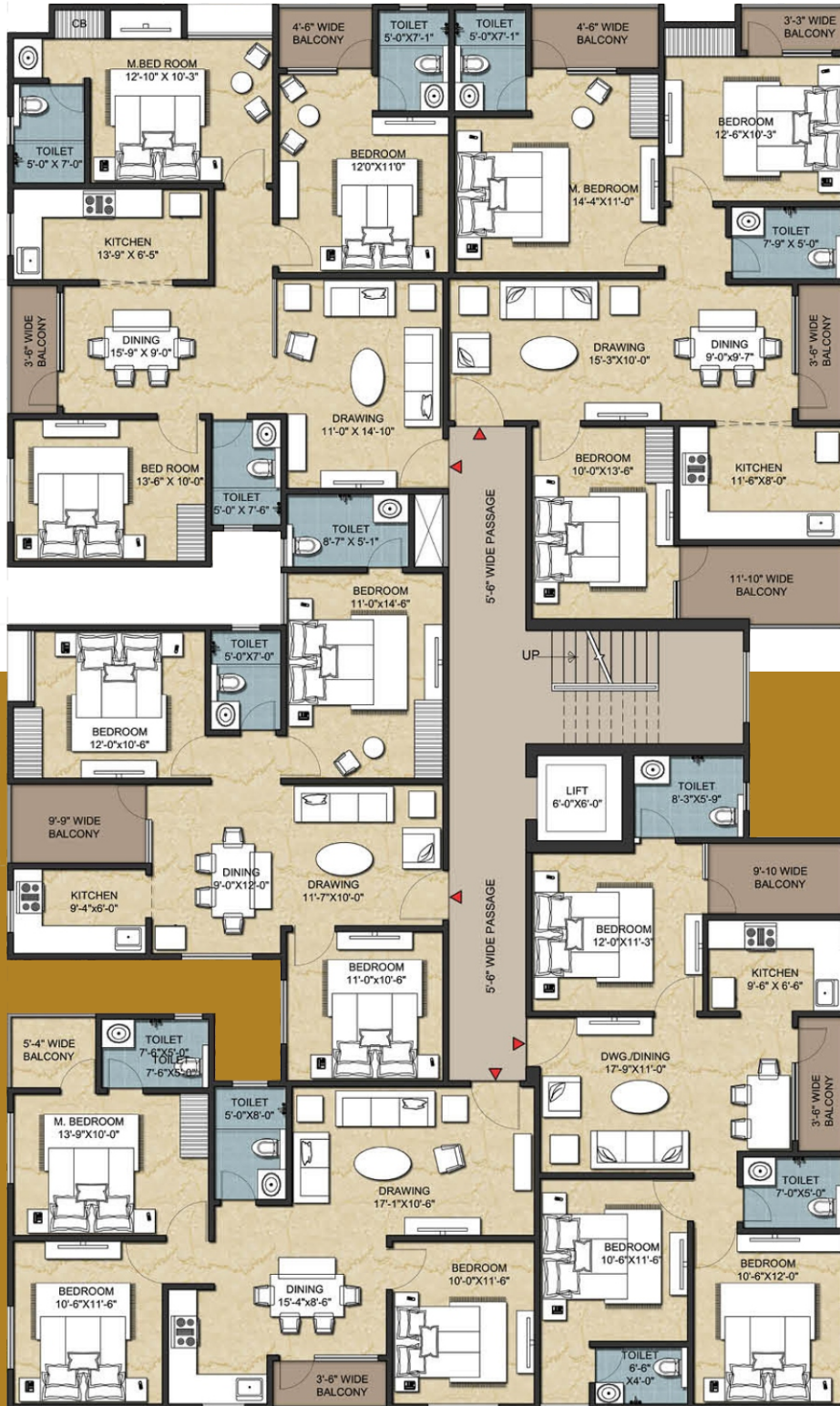
SITE PLAN



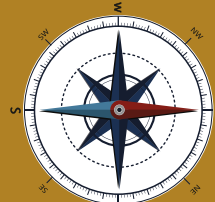
GROUND FLOOR PLAN (BLOCK-A)



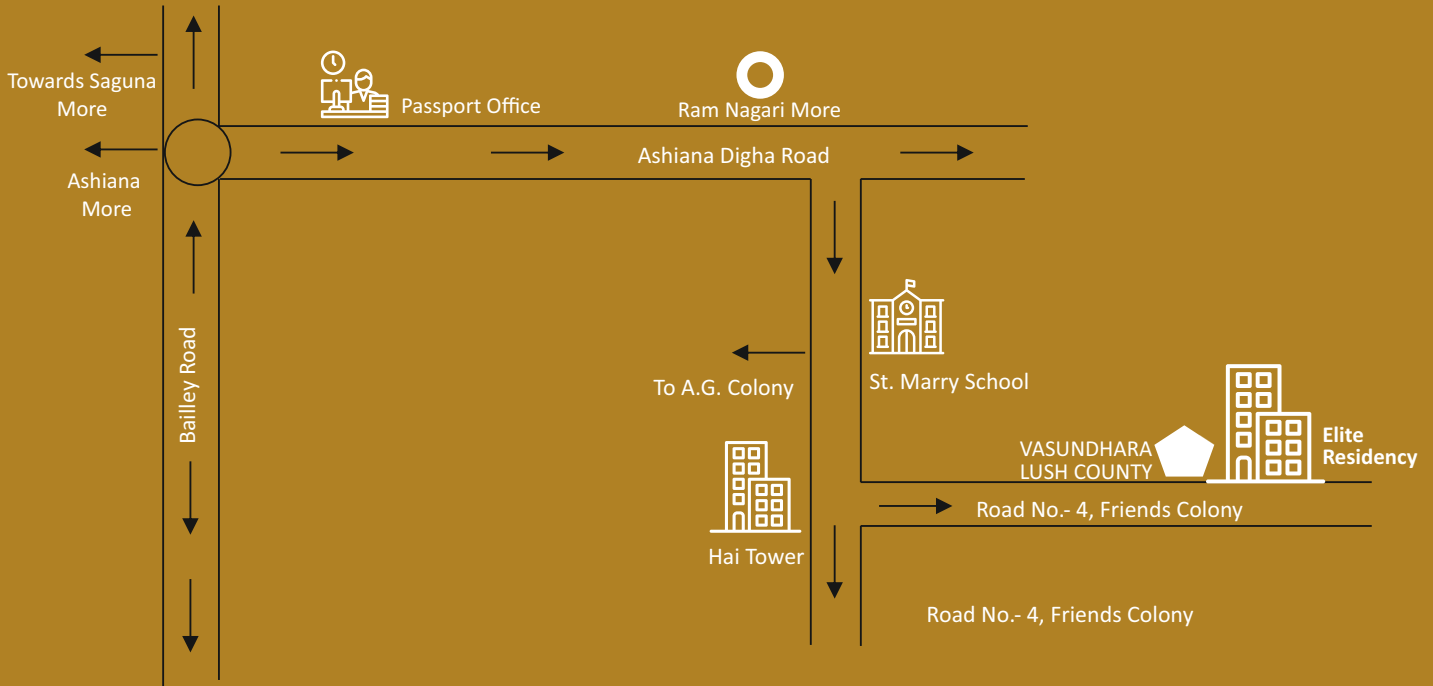
GROUND FLOOR PLAN (BLOCK-B)



TYPICAL FLOOR PLAN (BLOCK-B)



LOCATION MAP



- Distance from IGIMS - 2.5 km
- Distance from Airport - 4.4 km
- Distance from Patna Jn. - 7 km
- Distance from Patliputra Jn - 2.5 km

Site Address

Road No. - 4, Friends Colony,
Jay Prakash Nagar, Ashiyana Digha Road, Patna - 800025

Bhawani Infracon Pvt. Ltd.

305, 3rd Floor, Kaushalya Estate, Dak Banglow Road, Patna - 800001
t: 0612-2204211 | m : 9608969696/7781020952
e: info@bhawaniinfracon.com

ARCHITECT: M/S DES ARC

UG SR 1A | Upper Ground Floor, Ansal Plaza

Sector - 1, Vaishali, Ghaziabad - 201010 | Ph. : (O) 9818711273, 9818799463

BANKING PARTNER:



Bhawani
INFRACON PVT. LTD.